



Hallym University Sacred Heart Hospital

A complication of EUS-guided pseudocyst drainage from gastric antrum

한림대학교 성심병원 소화기 내과
문성훈, 신동우



Hallym University Sacred Heart Hospital

46/M

C/C: Abdominal pain

P/I: 이전에 **alcoholic pancreatitis** 병력이 있는 환자가 복통과 황달을 주소로 내원하였다.

Initial LAB

CBC: 6200 – 12.9 – 274K

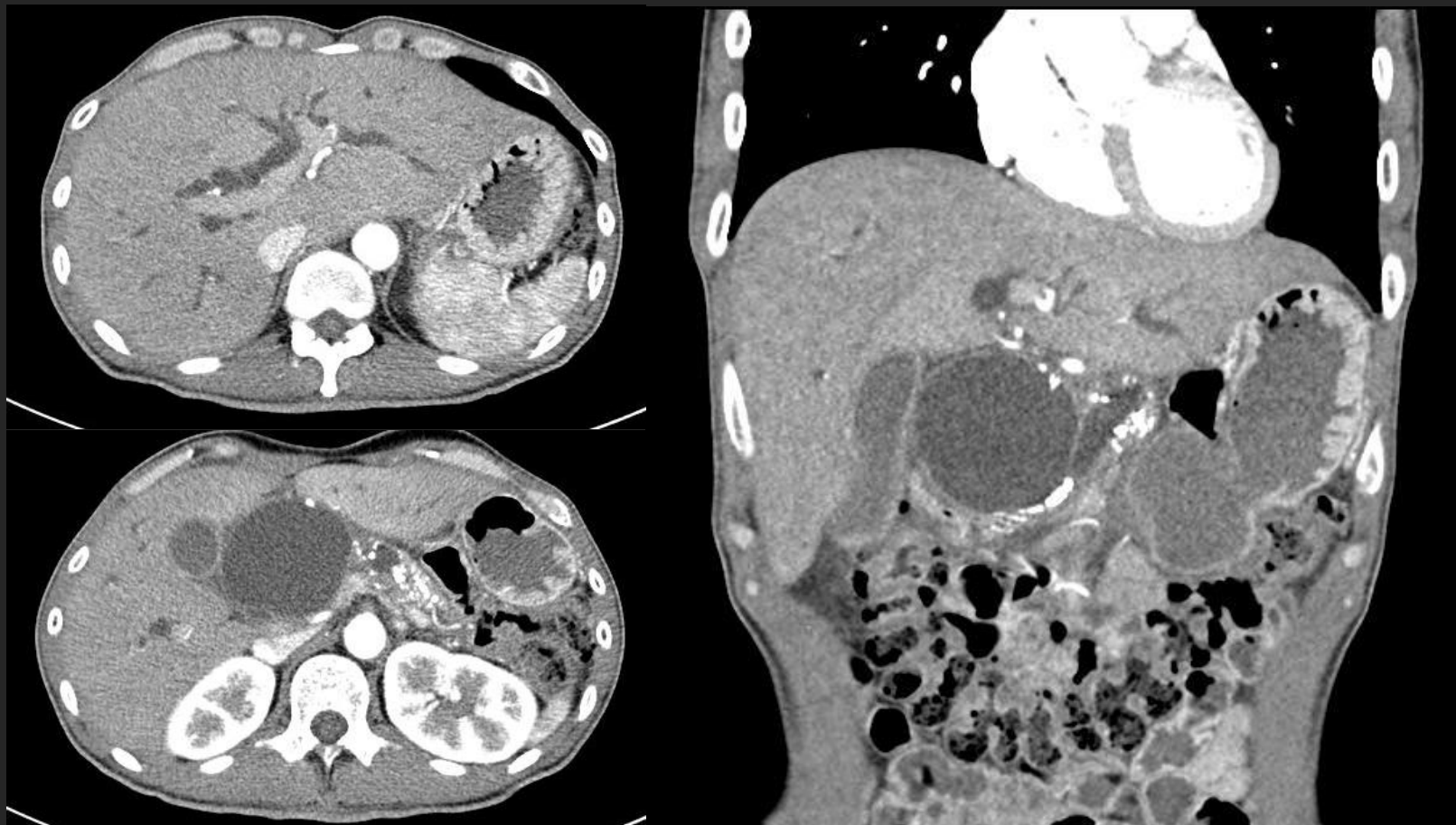
AST 47 ALT 28 ALP 298 GGT 261

Bilirubin (t/d) 6.37/5.91

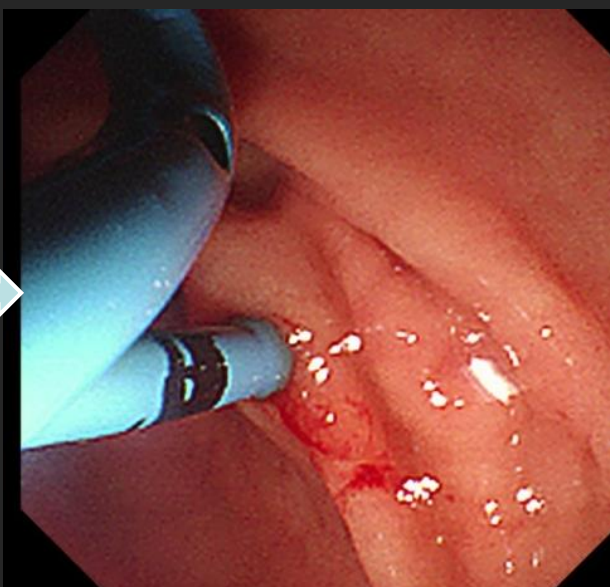
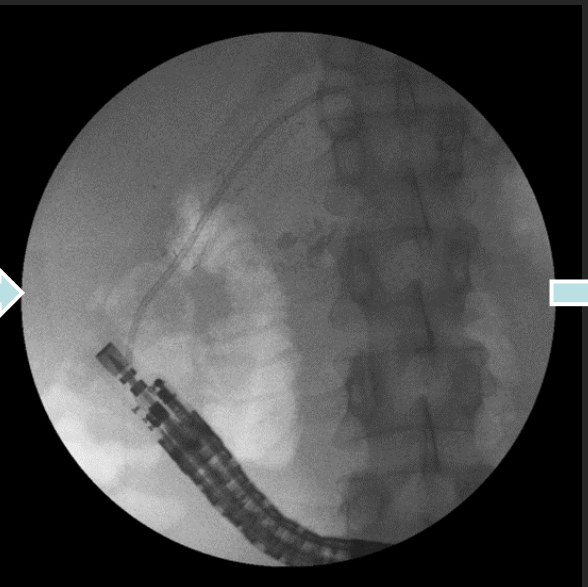
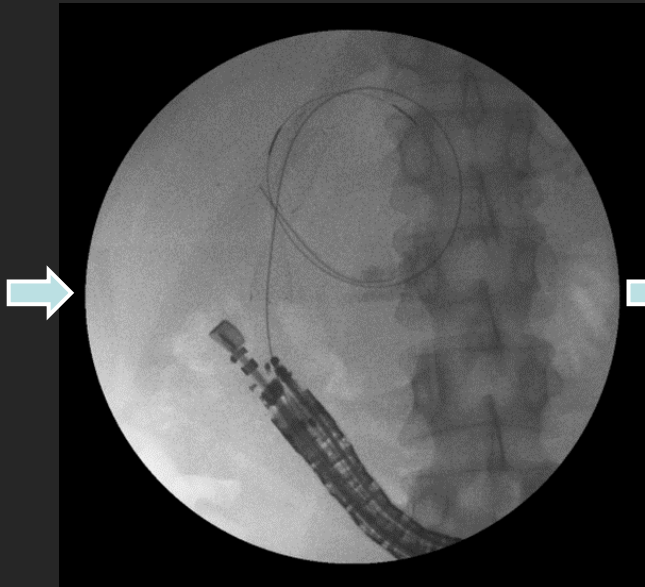
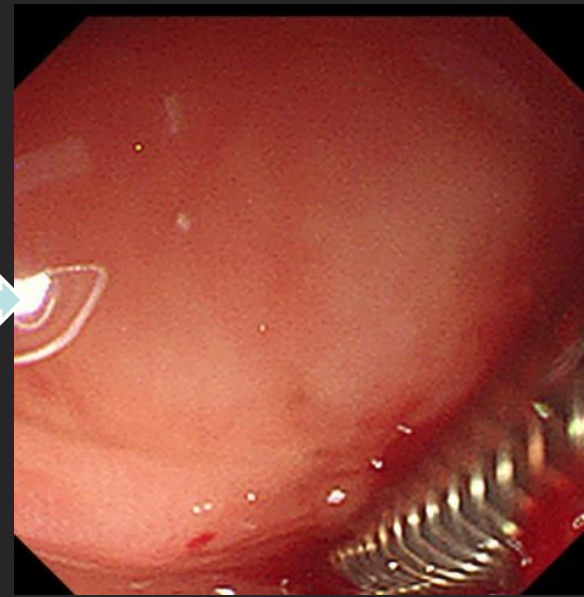
Amylase 181

CRP 3.59 mg/L

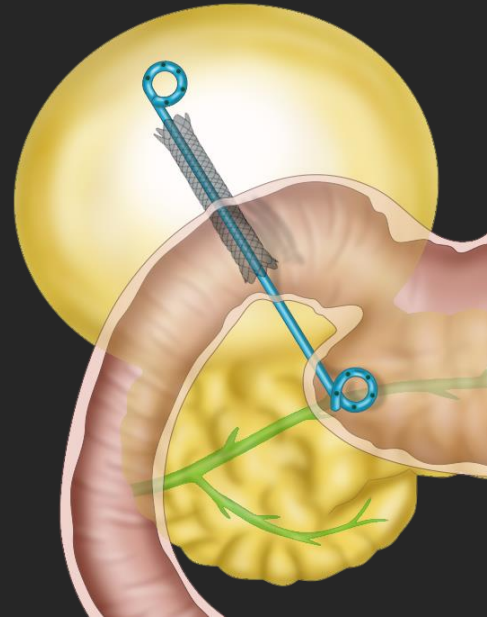
Initial CT



EUS-guided Pseudocyst Drainage From Gastric Antrum

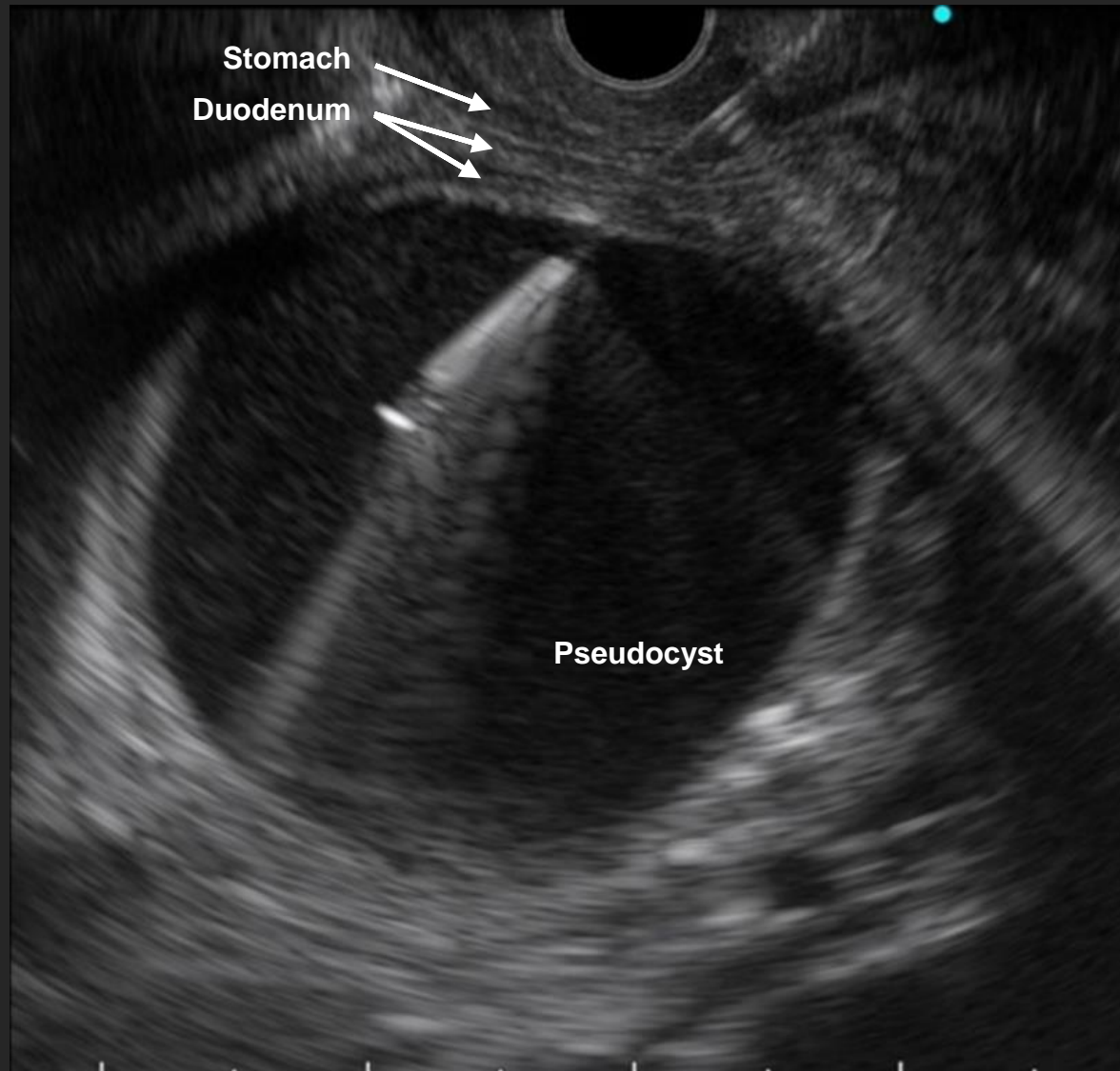


Routine follow-up non-enhance CT (2 days after drainage)
(Abdominal pain and jaundice were improved after drainage)



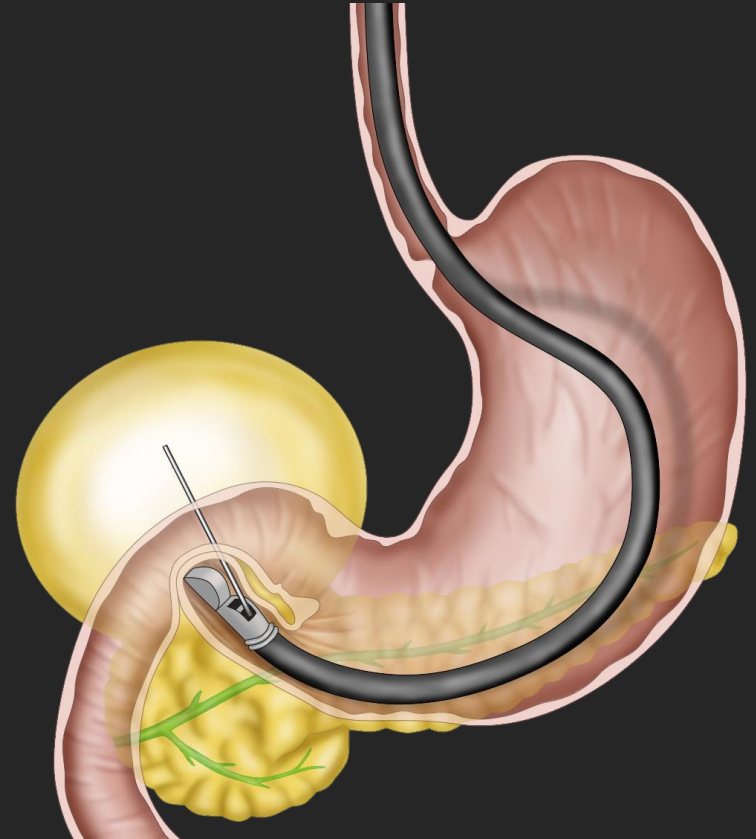
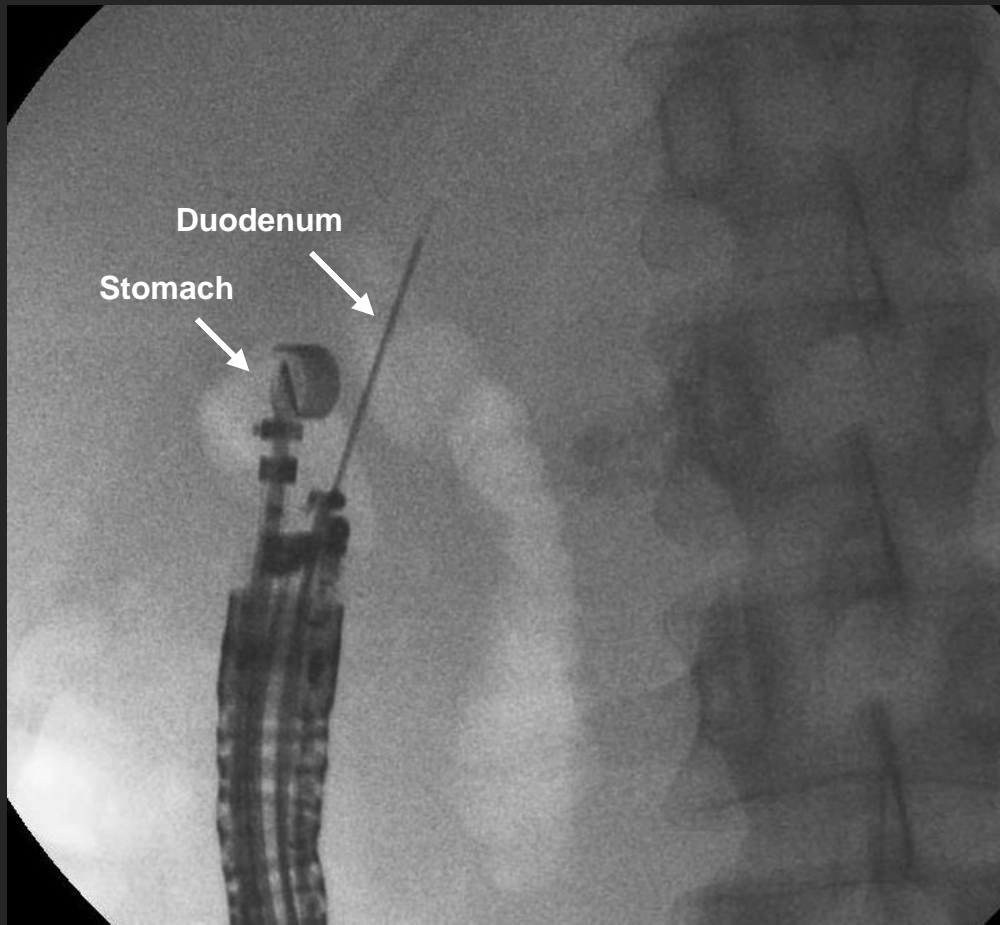
Retrospective Review of the Procedure

EUS Images of Needle Puncture



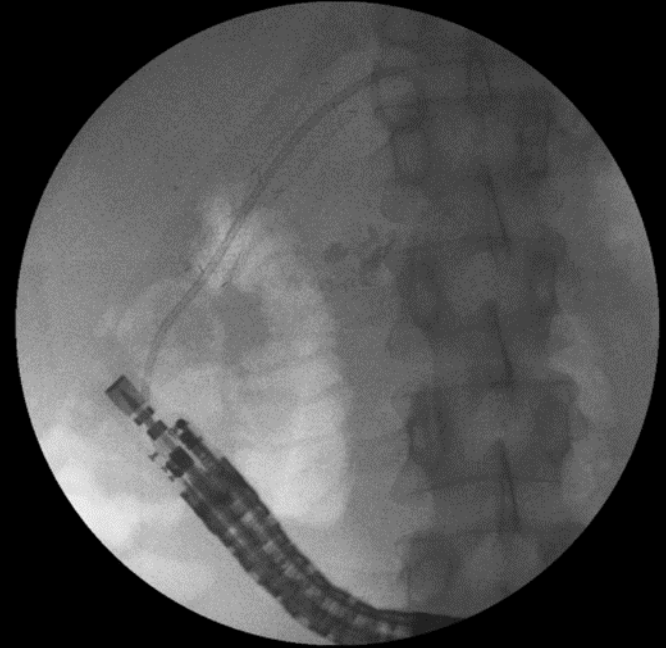
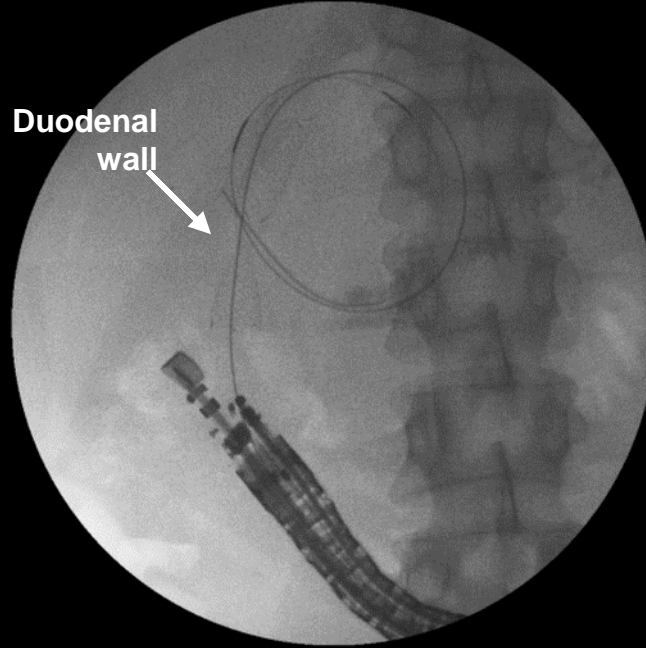
Double puncture of the stomach and duodenum

Fluoroscopic Image of Needle Puncture



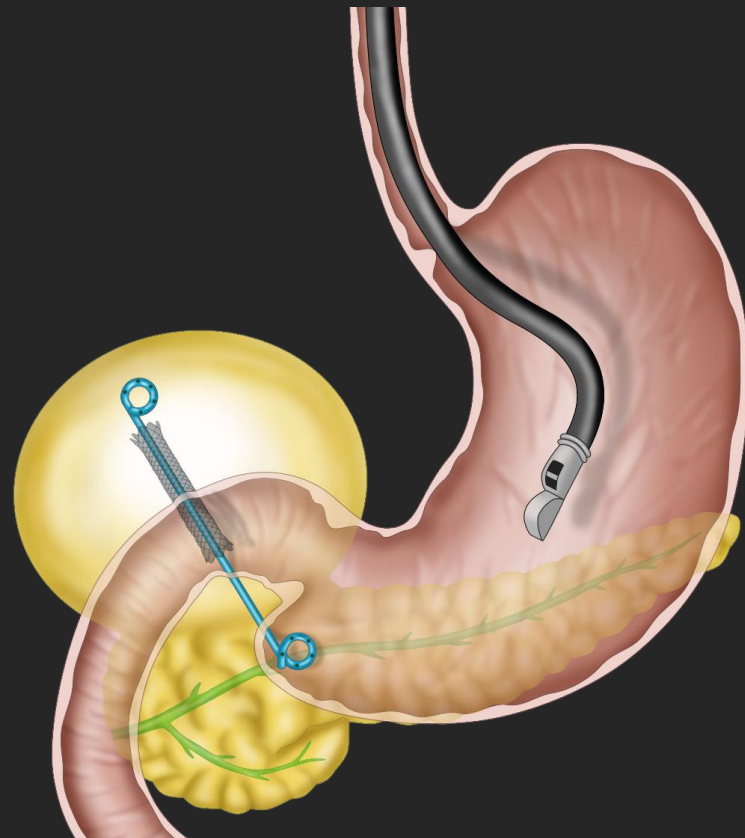
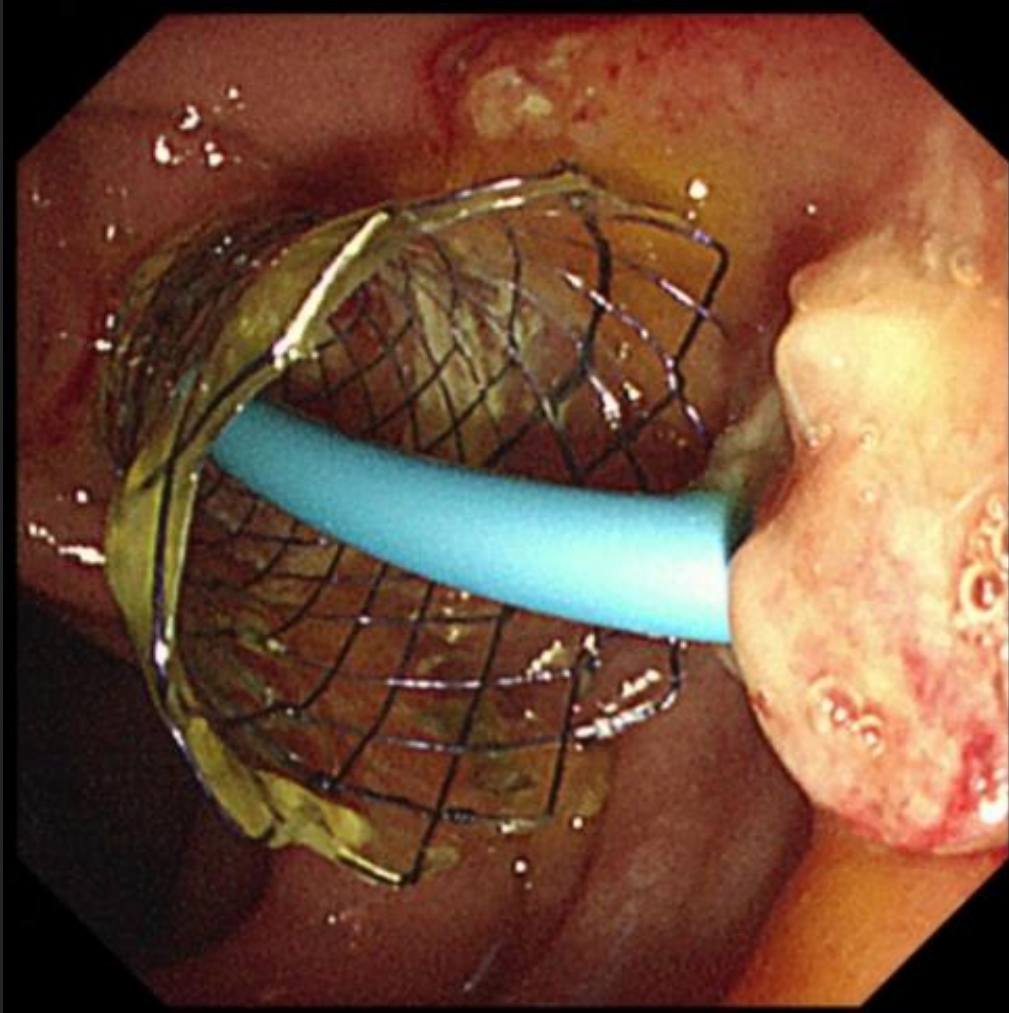
Double puncture of the stomach and duodenum

Fluoroscopic Images during Pseudocyst Drainage

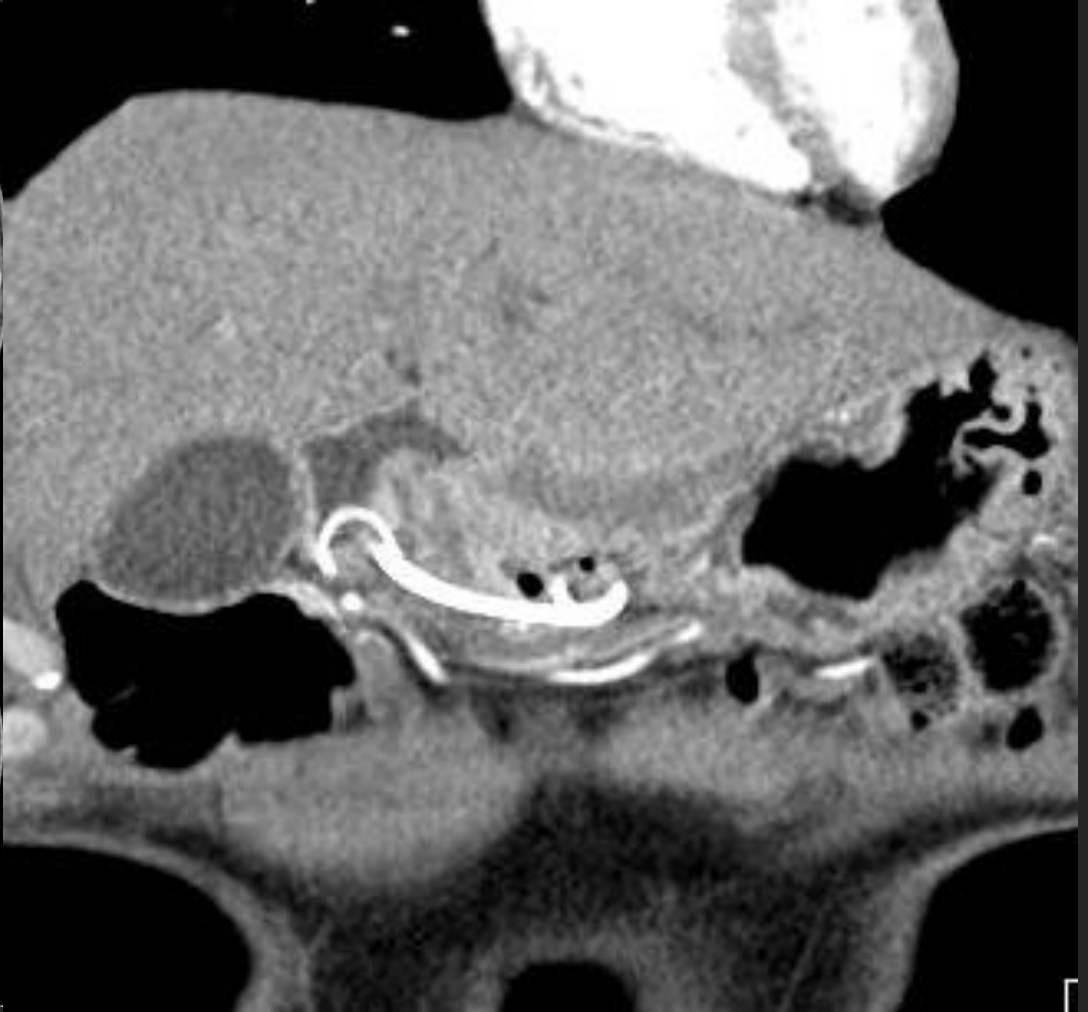


Endoscopic Images of Cysto-Duodeno-Gastrostomy

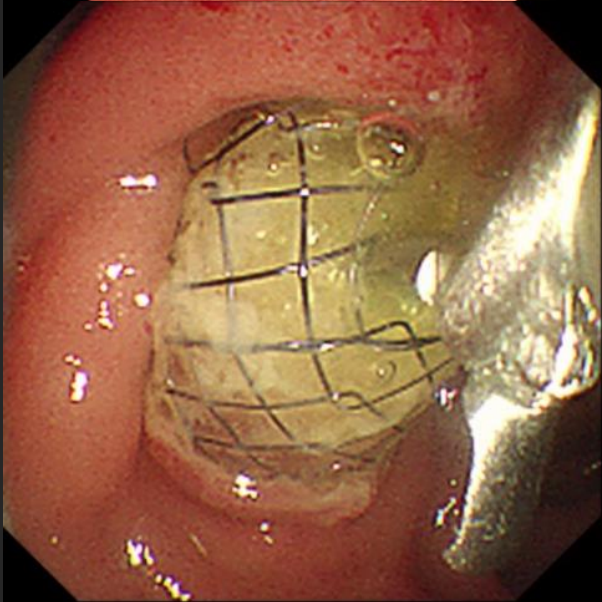
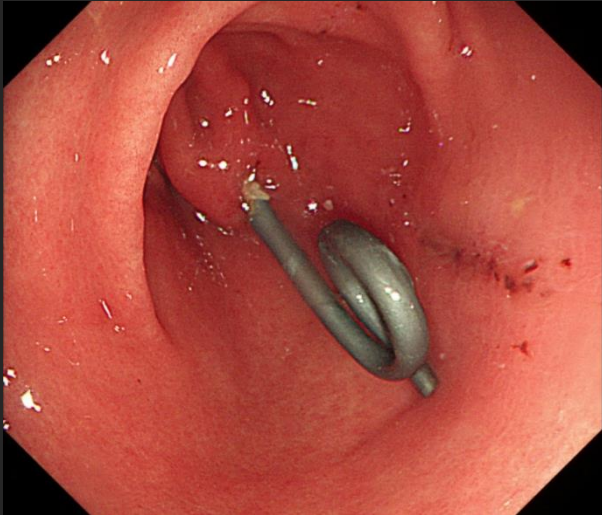
Endoscopic Images from Duodenum



Follow-up CT after 1 month (LFT abnormality was normalized)



Endoscopic removal of two stents (from duodenum)



경청해 주셔서 감사합니다!